



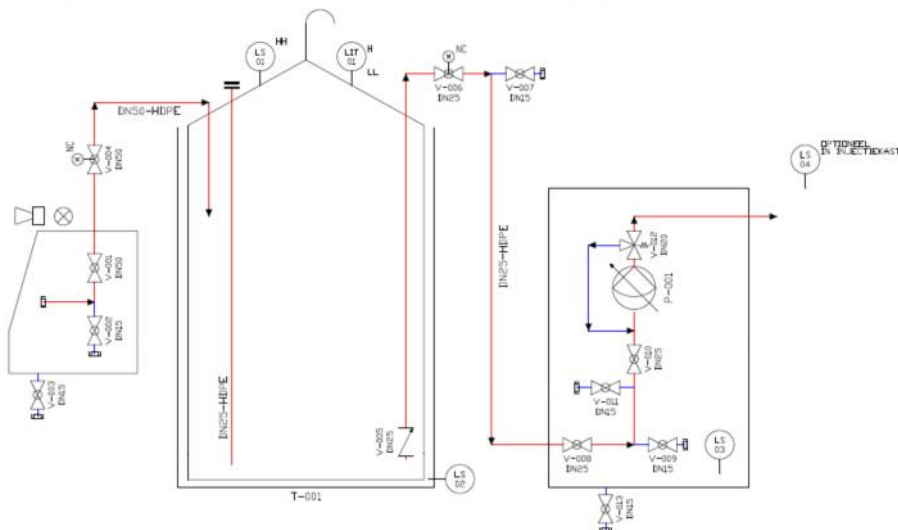
## Mobile chemical storage and dosing for rent

### CHEMDOSE10: 10 m<sup>3</sup> mobile storage and dosing for various chemicals

Rental of mobile chemical storage and dosing installation with:

- Steel coated frame with lifting lugs
- Double containment HDPE with content of 10.000 litre
- Filling cabinet with Akzo couplings
- Dosing cabinet with dosing pump(s) with various capacities
- Radar content measurement
- Instrumentation including safety against over-filling, leakage detection and alarms
- Safety resources such as eye-shower, overall, face screen and gloves
- BRL K-903 certificate for chemical storage and dosing
- Optional: gas scrubber or gas adsorption cartridge





## Mobile chemical storage and dosing for rent

### CHEMDOSE10: rental of 10 m<sup>3</sup> storage and dosing installation for various chemicals

Frame measurement without walking frame :	3360 x 2500 x 3500 mm (LxBxH)
Weight :	2650 kg (empty)
Content chemical storage tank :	10.000 litre gross
	9000 litre nett at 90% filling
Content double containment outside tank :	11.000 litre
<b>Safeties</b>	
-	Safety against over-filling: automatic valve DN50 (NC)
-	Leakage detection 2x: partition wall and dosing cabinet, optional in injection cabinet
-	Alarms: acoustic, visual (lamp) and on terminals in control cabinet
-	Emergency stop
-	Earthing bolt

#### Connections

-	Chemical coupling in filling cabinet :	Akzo coupling right DN50
-	Chemical flexible dosing hose :	several diameters and qualities
-	Flange connection :	option gas scrubber or gas adsorption cartridge
-	Electrical connections :	1x 230VAC, 50Hz, 25Amp with earth

Signals	:	Central alarm on terminals in control cabinet
	:	level measurement digital on display
	:	level measurement mA signal on terminals
Dosing pump(s) in cabinet	:	external control dosing pump
	:	Grundfos DDA 0-7,5 l/h (16 bar);
	:	other capacities up on request

The whole installation is designed and constructed following the BRL K-903 and certificated for storage and dosing of chemicals. The unit holds a complete construction dossier including material certificates.